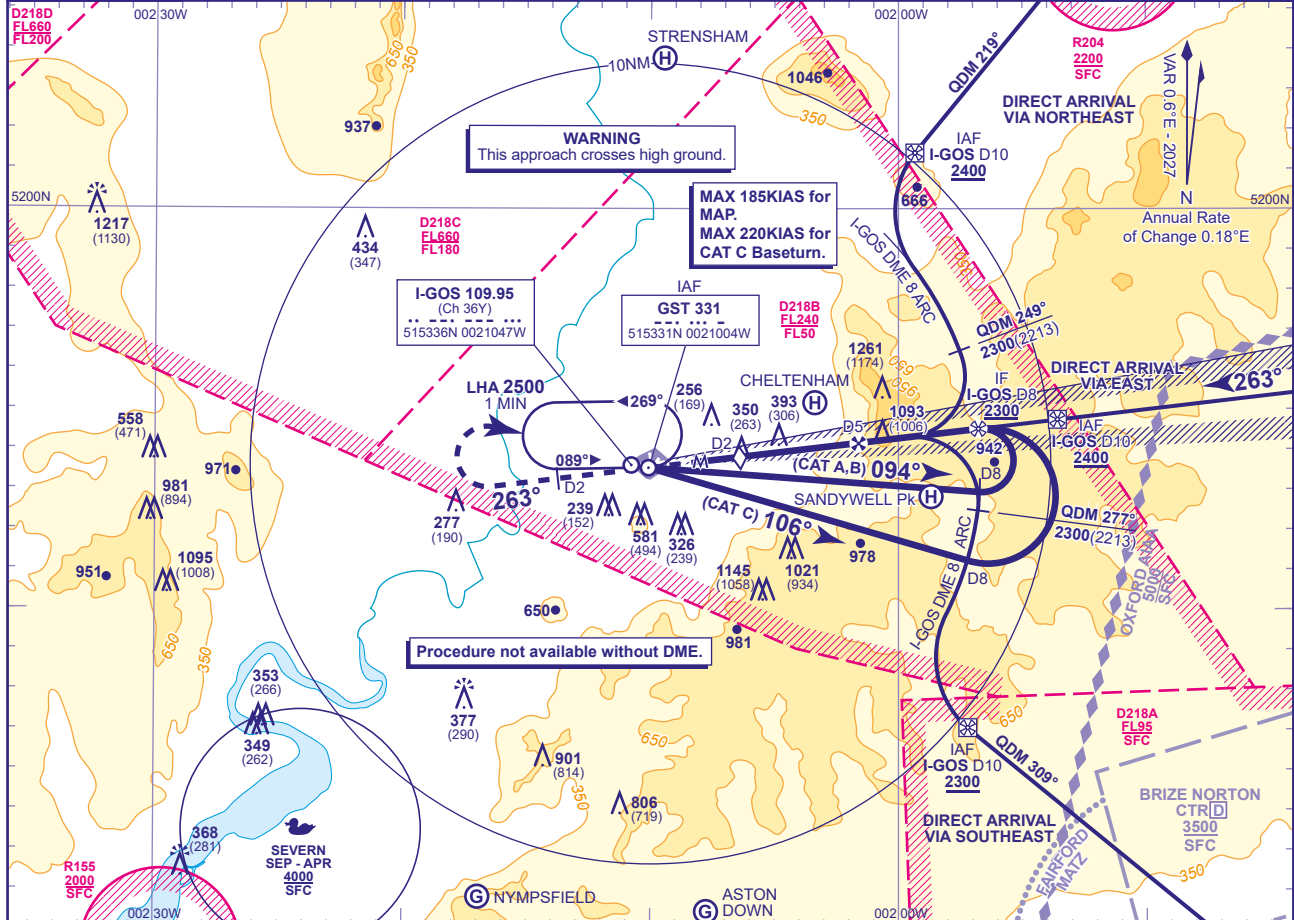


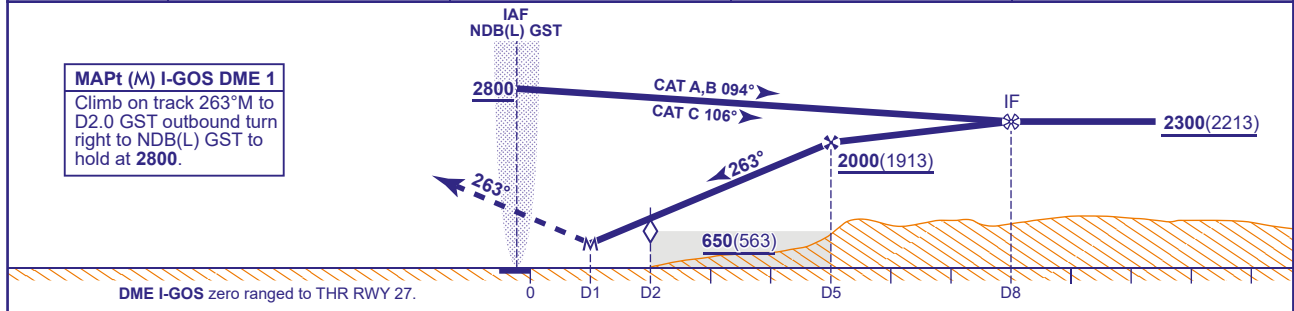
INSTRUMENT APPROACH CHART - ICAO

**GLOUCESTERSHIRE
LOC/DME/NDB(L)
RWY 27**
(ACFT CAT A,B,C)

<p>MSA 25NM NDB(L) GST</p>	APP 128.555	GLOSTER APPROACH	AD ELEVATION 101	TRANSITION ALTITUDE 3000
	TWR 122.905	GLOSTER TOWER	THR ELEVATION 87	
	RAD 128.555, 120.980	GLOSTER RADAR	OBSTACLE ELEVATION 1261 AMSL (1174) (ABOVE THR)	
	ATIS 127.480	GLOSTER INFORMATION	BEARINGS ARE MAGNETIC	



RECOMMENDED PROFILE Gradient 6.13%, 373FT/NM				
DME I-GOS	4.5	4	3	2 (SDF)
ALT(HGT)	1800(1713)	1630(1543)	1250(1163)	880(793)



Aircraft Category		A	B	C	Rate of descent	G/S KT	160	140	120	100	80
OCA (OCH)	Procedure	600(513)	600(513)	600(513)		FT/MIN	990	870	750	620	500
VM(C)OCA (OCH AAL)		Total Area	1000(899)	1000(899)	1500(1399)						
		North of RWYs 04/22 and 09/27	830(729)	830(729)							

NOTES 1 NDB(L) GST occasionally subject to erroneous indications within 5NM of Droitwich on approach to RWY 27.
2 Aircraft will normally be required to hold not lower than 4000 or the equivalent FL.

CHANGE (3/26): MAG INFO REVISED. MAG HEADINGS. EGD218A, EGD218C VERTICAL LIMITS REVISED.

AERO INFO DATE 15 DEC 25

AD 2-EGBJ-8-5